




Alienware Pro Gaming Keyboard AW768 User's Guide

Regulatory Model: AW768

A L I E N W A R E™ 

Notes, cautions, and warnings

-  **NOTE:** A NOTE indicates important information that helps you make better use of your computer.
-  **CAUTION:** A CAUTION indicates potential damage to hardware or loss of data if instructions are not followed.
-  **WARNING:** A WARNING indicates a potential for property damage, personal injury, or death.

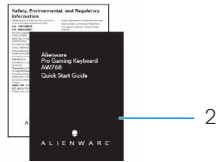
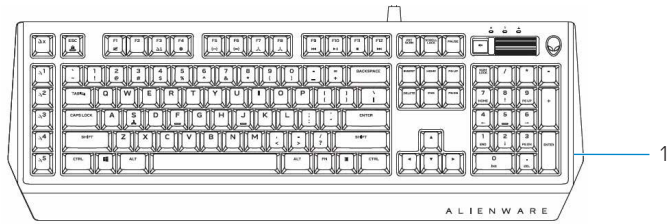
Copyright © 2017 Dell Inc. or its subsidiaries. All rights reserved. Dell, EMC, and other trademarks are trademarks of Dell Inc. or its subsidiaries. Other trademarks may be trademarks of their respective owners.

2017 – 07
Rev. A00

Contents

What's in the box	4
Features	5
Setting up your gaming keyboard	7
Alienware Control Center	8
Installing Alienware Control Center	8
Using the Alienware Control Center	9
Configuring the Lighting	10
Configuring the Macros	11
Configuring the Settings	12
Using your gaming keyboard	13
Troubleshooting	15
Specifications	16
Statutory Information	17
Warranty	17
Limited warranty and return policies	17
For U.S. customers:	17
For European, Middle Eastern, and African customers:	17
For non-U.S. customers:	17

What's in the box

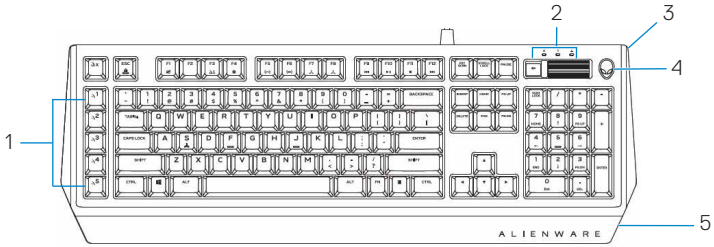


1 keyboard

2 documents

 **NOTE:** The documents that shipped with the gaming keyboard may vary based on your region.

Features



Feature	Functionality
1 Programmable macro keys (15)	Allows you to add a custom keystroke for each macro key with software recording. To change the functionality of each macro key, see Alienware Control Center .
2 Multimedia key and volume roller	Mute key to mute the speaker, scroll up the volume roller to increase the volume and scroll down to decrease the volume.
3 Three-angle adjustable feet	Allows you to customize the tilts to three different angles.
4 Alienhead logo	Load custom lighting effect for the Alienhead logo. To change the lighting effect of the Alienhead logo, see Alienware Control Center.
5 Alienfx tron lighting	Load custom lighting effect for the Alienfx tron lighting. To change the lighting effect of the Alienhead logo, see Alienware Control Center.

This USB gaming keyboard with iconic Alienware aesthetics, 15 programmable macro key functions, mechanical-switch keys, and a zone-based backlight is your gateway to gaming glory.

Some additional features of this keyboard include:

- Iconic Alienware design with AlienFX 16.8M RGB 13 zone-based lighting

- Brown-mechanical keys
- Tested for durability to a 50 million cycle life
- 50g actuation force
- 60g tactile force
- 1.9mm actuation distance
- 4mm total travel distance
- Less than 5ms bounce time (during actuation speed of 0.4 m/s)
- 1000 Hz (1ms) polling rate
- Anti-Ghosting and N-key rollover on all keys
- All programmable keys
- 256kb onboard memory
- Braided nylon cable
- Optional palm rest (sold separately)

Increased control and accuracy

Smooth, responsive game play:

Anti-ghosting and N-key rollover on all keys, and mechanical switches with 50 million keyboard life cycle, onboard memory, and 15 programmable macro key functions with on-the-fly recording means your keyboard lives longer while you increase your kill speed with improved keystroke rates and accuracy.

Bring a competitive edge to every game:

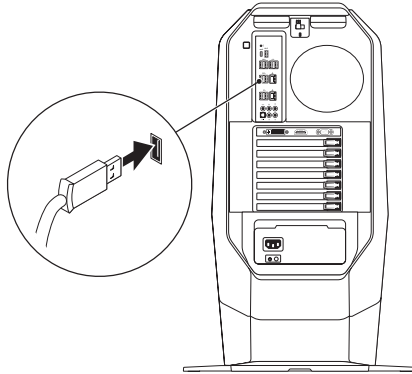
Mechanical-brown switches are designed with all gamers in mind—from novice to expert. They deliver solid tactile feedback with low actuation force and low click noise. Plus multimedia keys mean you have even more shortcuts at your disposal—like a dedicated audio roller.

Quick actuation and comfortable typing

Mechanical switches and N-key rollover on all keys and ergonomic comfort will keep you gaming for longer. Amp up the comfort even more with three adjustable feet angles and the optional magnetically attached palm rest.

Setting up your gaming keyboard

1. Connect your keyboard to the USB port on your computer.



2. Download and install the **Alienware Control Center**. See **Alienware Control Center**.

NOTE: You can use your gaming keyboard as a desktop keyboard without install the **Alienware Control Center**.

Alienware Control Center

You can customize the buttons on your keyboard, change lighting effects, and so on, using the Alienware Control Center.

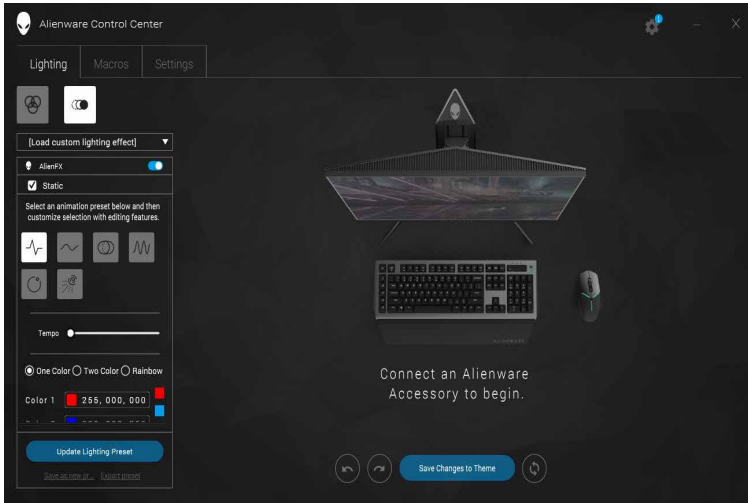
Installing Alienware Control Center

To install the Alienware Control Center:

1. Turn on the computer.
2. Go to www.dell.com/support/drivers.
3. Click **View products**.
4. Click **Electronics & Accesories**.
5. Click **Mice, Keyboards & Wireless Touchpads**.
6. Click **Alienware Advanced Gaming Keyboard – AW768**.
7. Click **Drivers & downloads**.
8. Scroll down the page and expand **Alienware Control Center**.
9. Click **Download**.
10. Save the file.
11. After the download is complete, open the file and follow the instructions on the screen to install the **Alienware Control Center**.

Using the Alienware Control Center

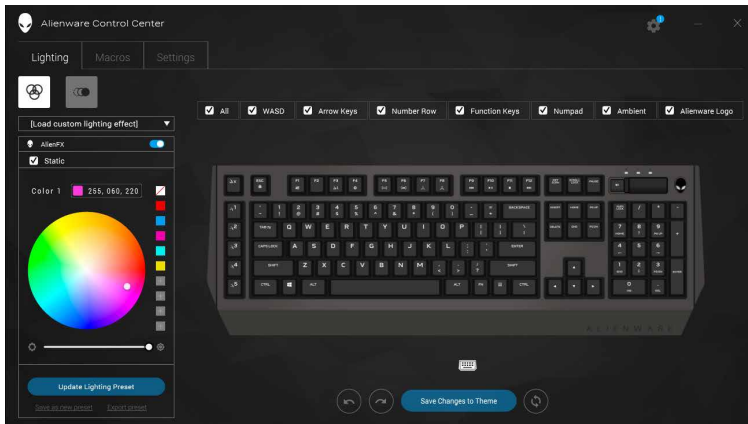
1. Double-click on the Alienware Control Center icon on your desktop to open the application. If your device is not attached, you will be prompted to connect an Alienware accessory to begin.



2. Plug in your Alienware accessory to the USB port on your computer.

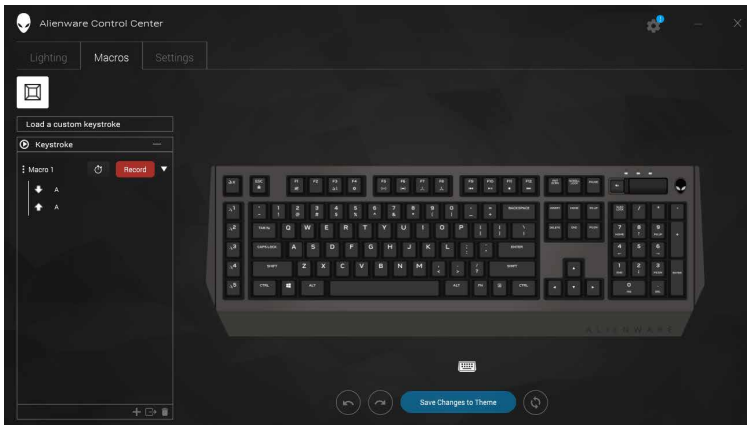
Configuring the Lighting

The **Lighting tab** allows you to customize the lighting effects on the Alienhead logo and AlienFX tron lighting.



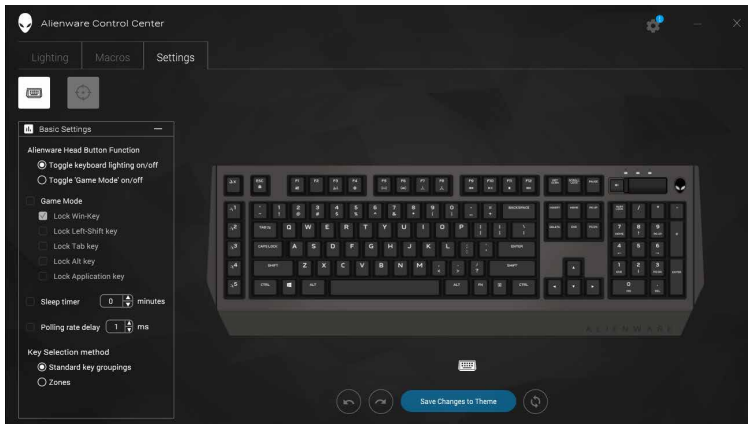
Configuring the Macros

The **Macros** tab allows you to customize the keystrokes for the macro keys.

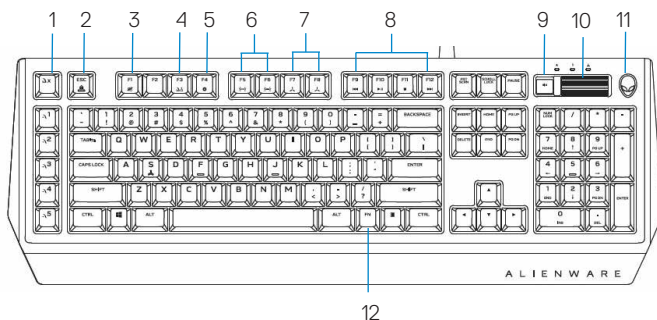


Configuring the Settings

The **Settings** tab allows you to change the basic settings for your keyboard.




Using your gaming keyboard



Keys	User action	Keyboard behavior	
1	Macro toggle/ record macro	Press this key once to toggle between the macro sets. Press and hold this key for more than three seconds start the macro recording process.	Opens the Alienware Control Center to start macro recording.
2	Fn Lock	Press FN + Fn Lock	Locks the F1 to F12 media control functions
3	Game Mode (disable Windows key)	Press FN + F1	Disables the Windows key function
4	Profiles stored on-board	Press FN + F3 once to cycle	Allows you to store three sets of profiles or lighting configurations.
5	Launch the Alienware Control Center	Press FN + F4	Launches the Alienware Control Center and opens the Theme Manager tab.

6	Keyboard-backlight adjustment	Press FN + F5 Press FN + F6	FN + F5 decreases the keyboard-backlight intensity. FN + F6 increases the keyboard-backlight intensity.
7	Ambient-light adjustment	Press FN + F7 Press FN + F8	FN + F7 decreases the ambient light on your keyboard. FN + F8 decreases the intensity of ambient light strip.
8	Media playback	Press FN + F9 Press FN + F10 Press FN + F11 Press FN + F12	FN + F9 Play previous track or chapter FN + F10 Play/Pause FN + F11 Stop FN + F12 Play next track or chapter
9	Mute	Press the mute key	Mutes the speaker
10	Volume control	Scroll the volume roller up or down	Scroll up the volume roller to increase the volume and scroll down to decrease the volume.
11	Alienhead	Press the Alienhead	Press the Alienhead to turn off/turn on the keyboard lighting for both the Alienhead and AlienFx.
12	FN toggle	Press and hold FN + F1 to F12	Toggle different FN functions from F1 to F12

Troubleshooting

Problems	Possible solutions
Keyboard is not functioning	<ul style="list-style-type: none">▪ Unplug the keyboard and plug it back in to the USB port on your computer.▪ Plug the keyboard to another USB port.▪ Restart the system.
Keyboard lighting is off	<ul style="list-style-type: none">▪ Press the Alienhead button on the keyboard. Ensure that the light is on on the keyboard.▪ Unplug the keyboard and plug it back in to the USB port on your computer.▪ Plug the keyboard to another USB port.▪ Restart the system.
You need more information in using the Alienware Control Center features	<ul style="list-style-type: none">▪ Open the Alienware Control Center.▪ Click on the Settings  icon.▪ Click on the About tab.▪ Click Launch Help.▪ Follow the instructions on the screen.
The gaming keyboard is not functioning based on the configuration selected in the Alienware Control Center	<ul style="list-style-type: none">▪ Ensure the Alienware Control Center is running on your computer.▪ Open the Alienware Control Center and ensure that the configuration for your gaming keyboard is set properly and saved.

Specifications

General

Model number	AW768
Connection type	USB
Supported operating systems	<ul style="list-style-type: none">▪ Microsoft Windows 8▪ Microsoft Windows 10

Electrical

Operating voltage	5V
Operating power current	Maximum up to 700mA

Physical Characteristics

Height	33.5 mm (\pm 0.5mm); 53.5mm with feet
Length	450 mm (\pm 0.5mm)
Width	172 mm (\pm 0.5mm)
Weight	1400g (\pm 10g)

Environmental

Operating temperature	0°C to 40°C
Storage temperature	-40°C to 65°C
Operating humidity	90% maximum relative humidity, non condensing
Storage humidity	90% maximum relative humidity, non condensing

Statutory Information

Warranty

Limited warranty and return policies

Dell-branded products carry a 1-year limited hardware warranty. If purchased together with a Dell system, it will follow the system warranty.

For U.S. customers:

This purchase and your use of this product are subject to Dell's end user agreement, which you can find at **Dell.com/terms**. This document contains a binding arbitration clause.

For European, Middle Eastern, and African customers:

Dell-branded products that are sold and used are subject to applicable national consumer legal rights, the terms of any retailer sale agreement that you have entered into (which will apply between you and the retailer) and Dell's end user contract terms.

Dell may also provide an additional hardware warranty—full details of the Dell end user contract and warranty terms can be found by going to **Dell.com**, selecting your country from the list at the bottom of the "home" page and then clicking the "terms and conditions" link for the end user terms or the "support" link for the warranty terms.

For non-U.S. customers:

Dell-branded products that are sold and used are subject to applicable national consumer legal rights, the terms of any retailer sale agreement that you have entered into (which will apply between you and the retailer) and Dell's warranty terms. Dell may also provide an additional hardware warranty—full details of Dell's warranty terms can be found by going to Dell.com, selecting your country from the list at the bottom of the "home" page and then clicking the "terms and conditions" link or the "support" link for the warranty terms.